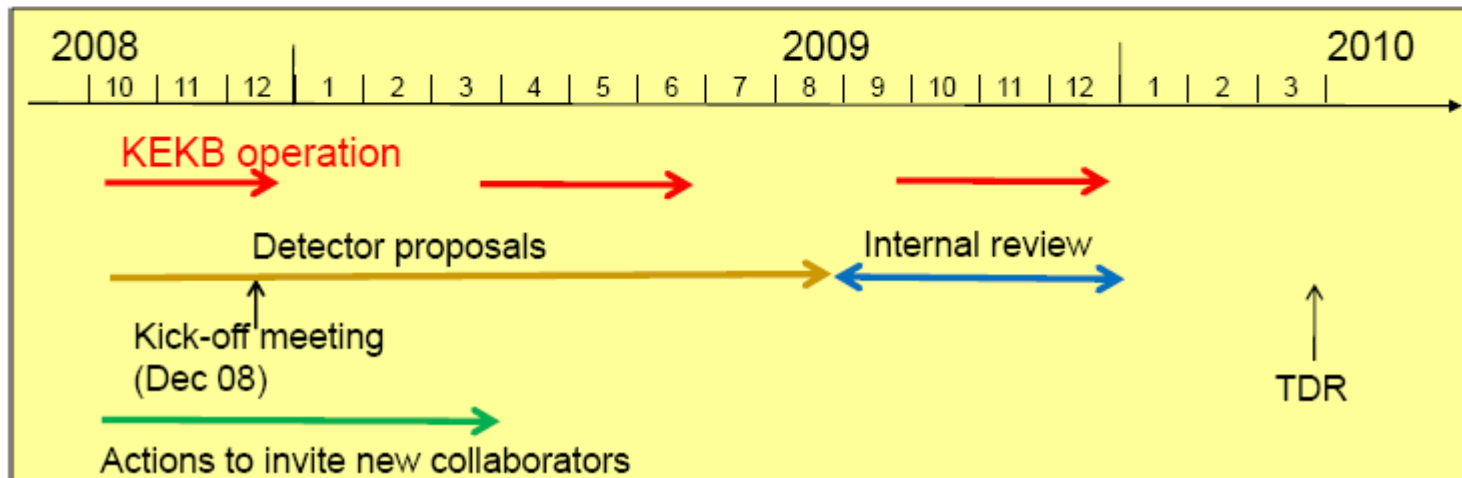


Announcement before parallel sessions

Yutaka Ushiroda

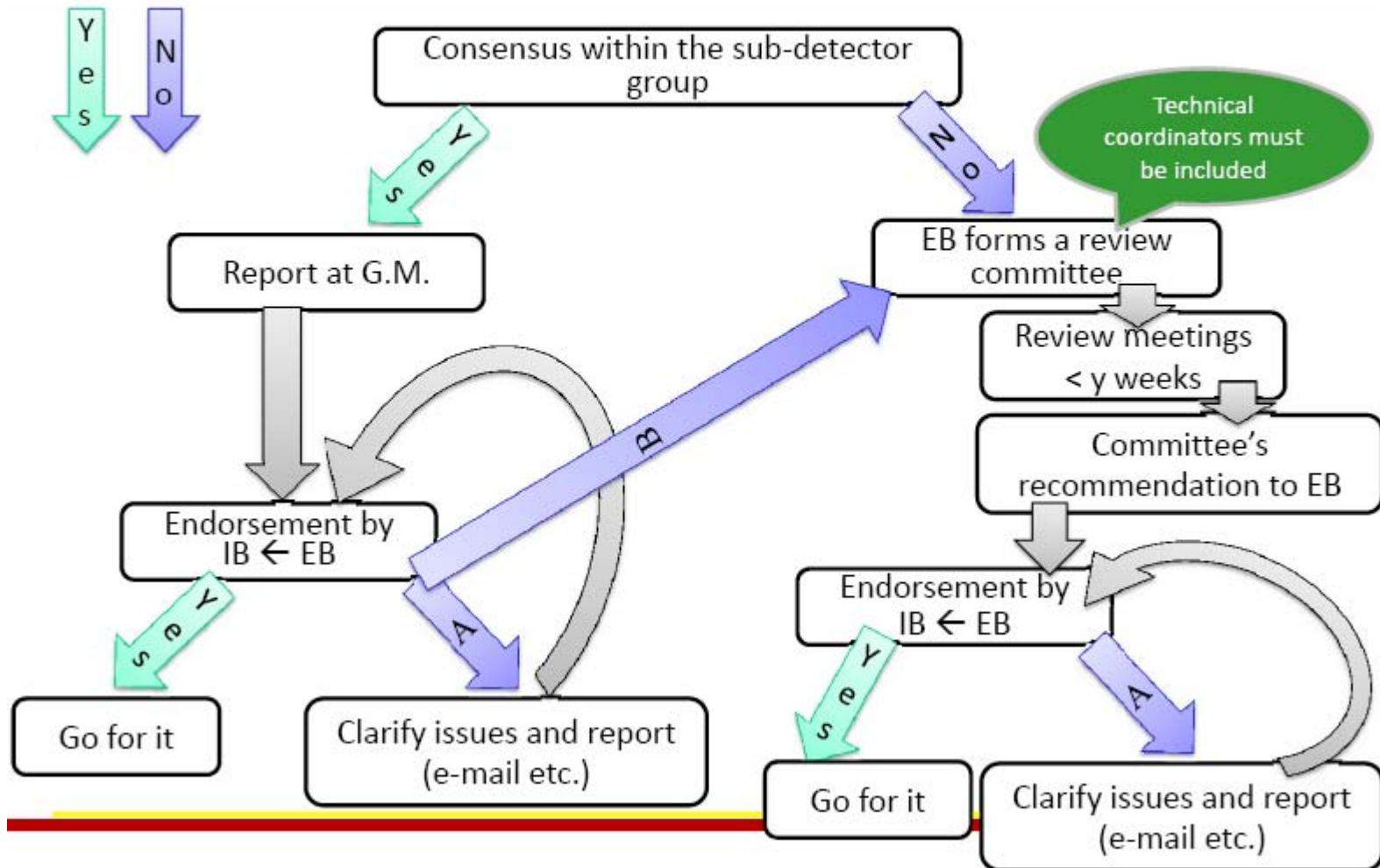
Near Term Plan (Preliminary)

- Run KEKB by 2009 (~6mo.)
- Shutdown for 3 years
- Start Super-KEKB/Belle at spring of 2013.
- “Detector study report” has been completed.
- Kick-off of the new collaboration: Dec.2008.
 - Two proto-collab. meetings; Mar.&Jul., 2008.
- The final detector design by Dec. 2009.



Schedule given last year is **STILL VALID** UNLIKE PAST YEARS!!

Decision tree for technology choices



If you cannot decide major options by August, we call for a review committee.

E-mail sent to group leaders on June 4th

Dear group leaders,

As you know, we are making big effort to win the full approval of the Belle II project by our government, and we are planning to soon send a request of the full budget for the next fiscal year. We, of course, assume we will get approval, and we will start construction from 2010. Spending three years for construction, we will resume machine operation from 2013. To meet this time-line, the global schedule toward the technology decision had been prepared, which was presented by Iijima-san at the ICFA seminar in October 2008 (attached). UNLIKE PAST YEARS, we have NO DELAY of the global schedule since then till now, which must be good news for us.

One feature of the technology decision discussed at one of the past collaboration meetings is so-called decision tree, which was also presented at the Belle PAC in March 2009 by Sakai-san (attached). If we don't have a consensus among sub-detector group members on the technology option, EB will call for a review committee. (Even if there is a consensus, if EB thinks it is required, EB will call for a committee.) Following the global schedule, we will start internal reviews in the end of August, which will be concluded by the end of December. If you wish a quick decision without internal reviewers, you must come to a single agreed technology option by August.

The coming collaboration meeting is the last one before the formation of internal review committees, where we would like to hear about the following issues from each sub-detector group (including DAQ/TRG/Soft/COMP):

- 1. List of possible options**
- 2. Pros and cons of options including the cost estimate**
- 3. Schedule toward the technology choice either in August or in December -- what should be clarified by when**
- 4. Schedule toward the DAY1 in 2013 autumn.**

Please discuss those items within your group by the collaboration meeting or during the collaboration meeting, and present the conclusion in the plenary talks.

Best regards,
Technical Coordinators

Sessions

3 go kan Seminar Hall

3 go kan 1F Meeting Room

3 go kan 3F 325

	Room A			Room B			Room C		
	13:30:00	3h	E-PID	13:30:00	3h	Soft/Comp	13:30:00	3h	ECL
	16:30:00	3h	IR	16:30:00	3h	DAQ	16:30:00	3h	Soft/Comp II
	20:00:00	1h	IB meeting (?)	IB members					
July 8	Room A			Room B					
	9:00:00	3h	B-PID	9:00:00	3h	SVD	9:00:00	3h	vacant
	12:00:00	1h30m	Lunch	12:00:00	1h30m	Lunch			
	13:30:00	2h	TRG	13:30:00	3h	PXD	13:30:00	3h	vacant
	15:30:00	1h30m	KLM				16:30:00	1h	CDC
	18:00:00	6h	Party w/ KEKB members						

Keep to time.

If you need more discussions, go to 325 (when vacant).

Party (Linac/KEKB/Belle)

Place: around KEBB control bldg.

Date & Time: July 8th (tomorrow) from 17:45

Fare: 2000yen (alcohol), 1000yen (non-alcohol)